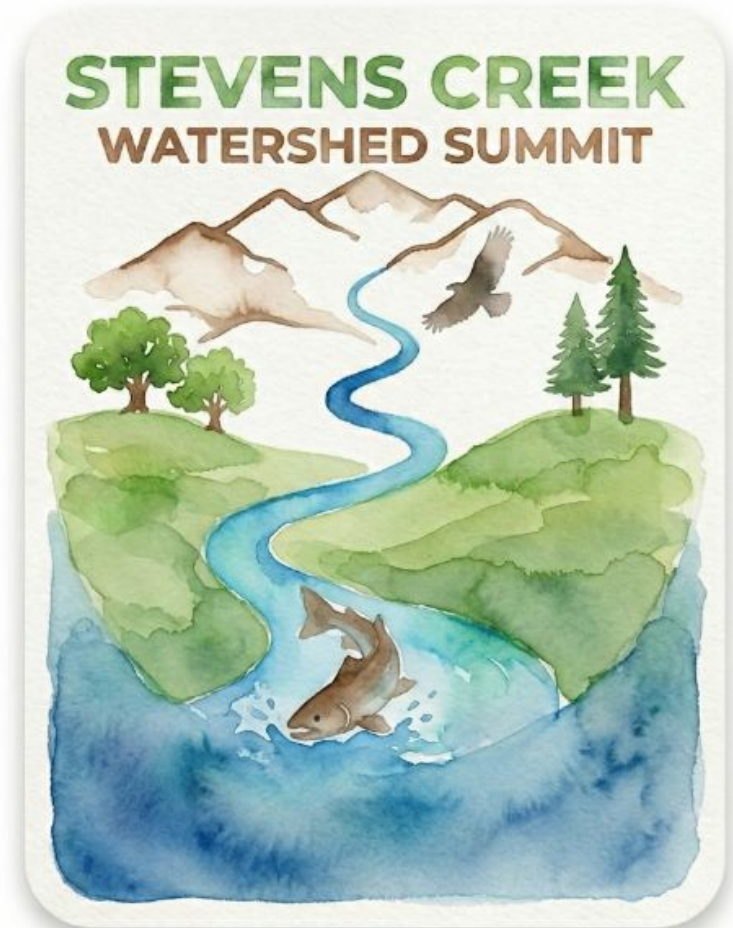


Riparian Restoration at McClellan Ranch Preserve

Stephanie Saffouri

Grassroots Ecology



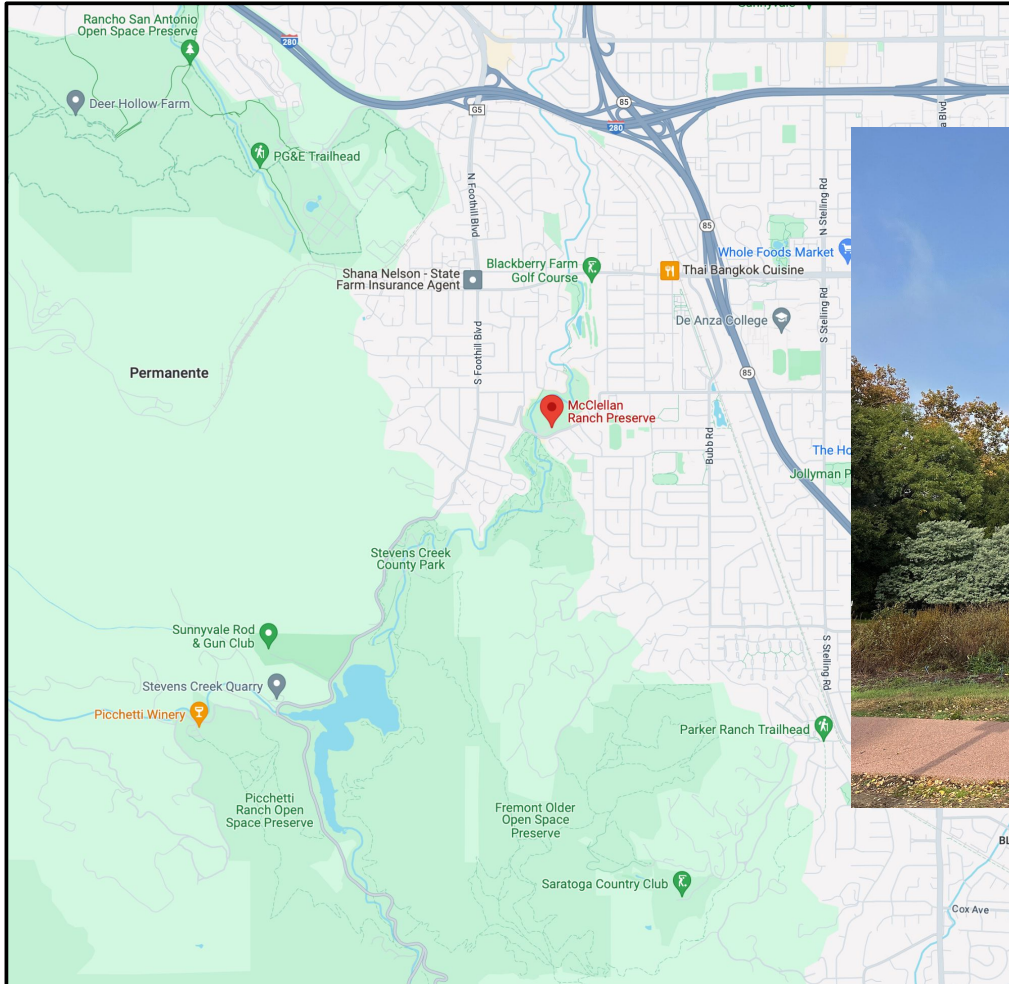
Grassroots Ecology



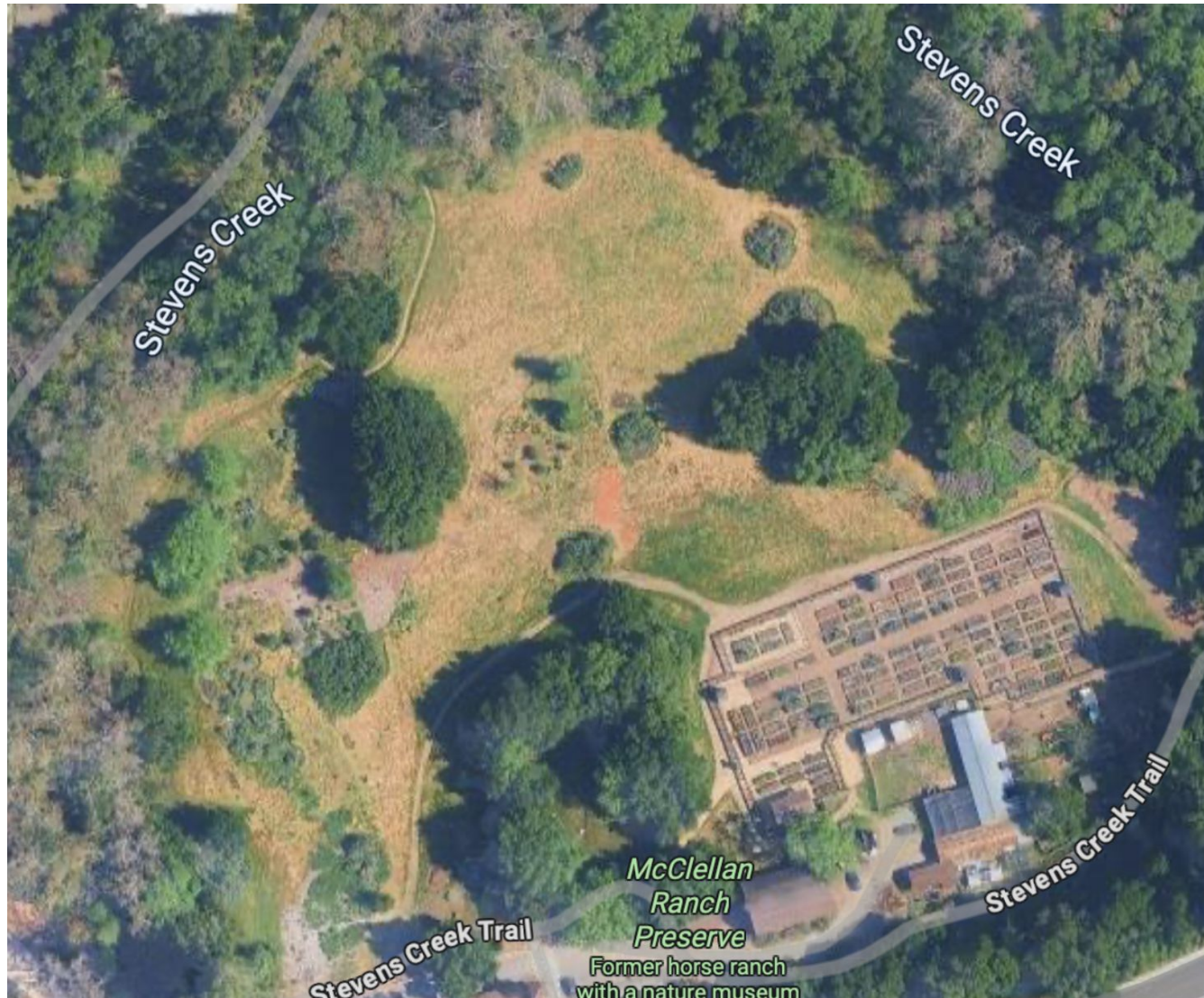
- Engage and educate the public to restore local ecosystems
- Community volunteers
- Native Plant Nursery



McClellan Ranch Preserve



McClellan Ranch Preserve



McClellan Ranch Preserve



Riparian habitat



- Top canopy: sycamore, cottonwood, black walnut
- Subcanopy: buckeye, box elder, elderberry, willows
- Shrubs: snowberry, poison oak, blackberry
- herbaceous: mugwort, beeplant, wild cucumber



Floodplain meadow



Grassland, coastal sage scrub, chaparral species



Biodiversity



André Karwath aka Aka / CC BY-SA (<https://creativecommons.org/licenses/by-sa/2.5>)



Biodiversity



Invasive species



Periwinkle



Invasive species



Italian arum



Cape ivy



Invasive species



Tree of heaven



Invasive species



Thistles



The Power of Volunteers



Rotary Cupertino



Top: 4-H Club



Left: De Anza College



The Power of Volunteers



Since 2012:

- 950 volunteer events
- 13,325 volunteers
- 17,000 native plants



Grassroots Ecology Programs



Youth Stewards



Grassroots Ecology Programs



California Naturalist Summer Interns



Grassroots Ecology Programs



Seniors volunteer days



Local schools and service groups



Helios School, Menlo
School, Sewa International



San Jose Conservation Corps



Creating space for native species



Questions?

